

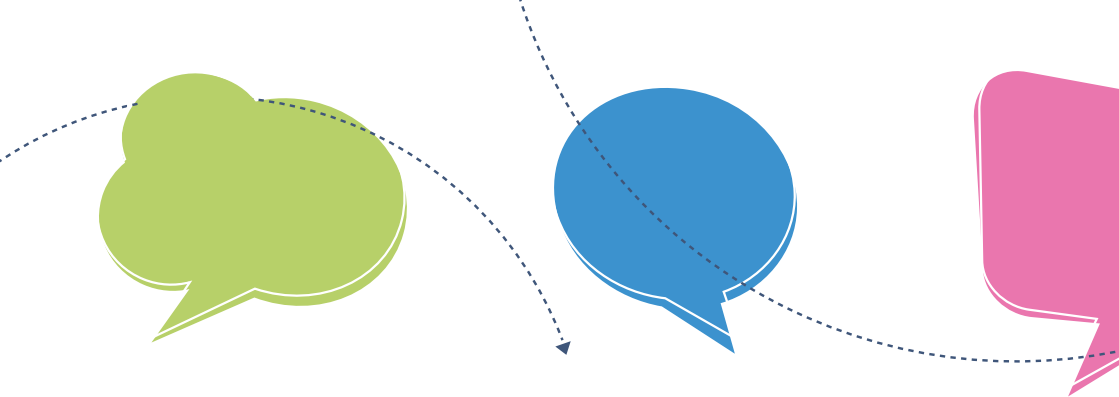
# Changing the learning landscape.

Connect to the future

Is your institution working on transforming learning and teaching?

Do you need to be more successful in engaging students?

[www.learninglandscape.co.uk](http://www.learninglandscape.co.uk)



## **Changing the Learning Landscape is a vibrant and timely range of activities that will:**

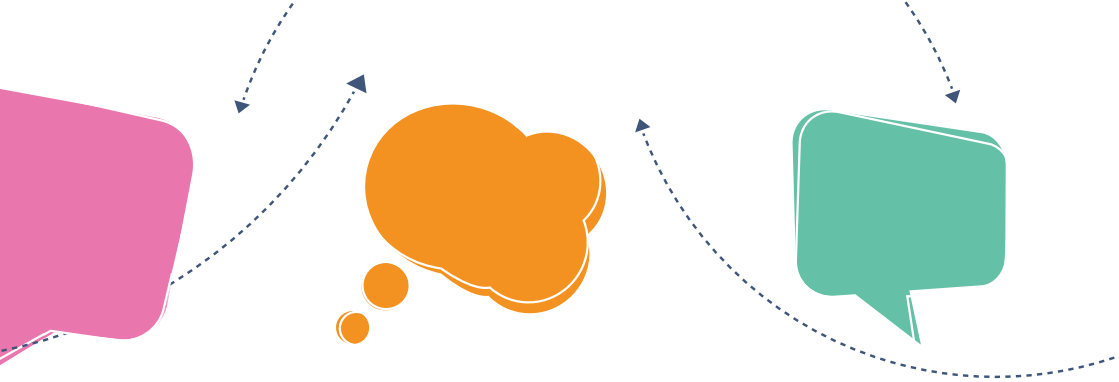
- I Support learning & teaching strategies for institutions
- I Enhance students' learning and their life prospects
- I Create solutions that are transferable and sustainable
- I Challenge leaders in a wide range of academic professions

**Changing the Learning Landscape** provides professional development activities for academic staff and educational developers.

**Changing the Learning Landscape** offers an intensive transformational programme for senior institutional and student union leaders in universities, university colleges and further education institutions providing higher education.

**Changing the Learning Landscape** also brings consultancy advice and expertise to assist institutions in bringing about strategic change in teaching and learning.

The partnership is funded by Hefce, and draws on the capability, knowledge and resources of five key organisations – working together for the first time.



**Changing the Learning Landscape enables institutions to develop students' capability. We can assist change initiatives which are intended, for instance to:**

- I Strengthen formative assessment
- I Support and challenge student learning through using social media
- I Develop student leadership related to learning and teaching
- I Champion innovation and change at departmental level
- I Build collaborative partnerships across functional and professional areas

You may well have in mind other benefits for change – talk to us and we will advise you on how Changing the Learning Landscape could work for you.

**Changing the Learning Landscape** will equip senior leaders (such as Pro Vice-Chancellors for Learning & Teaching) with approaches for working collaboratively, both across the institution and with a peer community, on delivering strategic change in learning and teaching.

It will also give Student Union leaders a unique chance to influence universities' strategic working around learning & teaching.

**Changing the Learning Landscape** will also support Directors of Learning & Teaching, educational developers and academic heads of department in bringing about successful change.

**To be part of this emerging story, visit at our website, where you will find more information and all the deadline dates for applications:**

[www.learninglandscape.co.uk](http://www.learninglandscape.co.uk)

**Follow us...**



xxxxxxx



xxxxxxx

